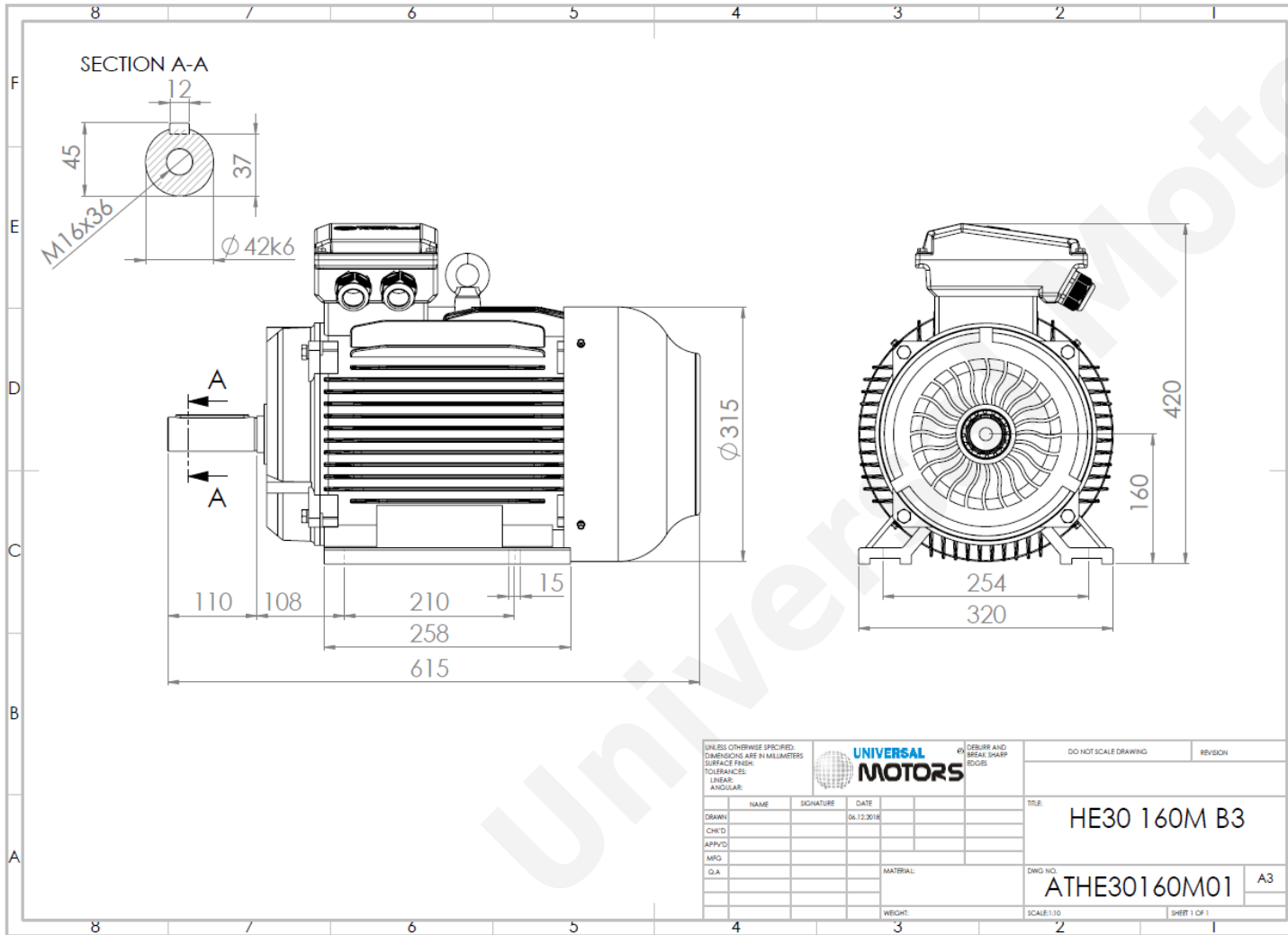




# TECHNICAL DATA

Three Phase Electric Motors - Cast Iron Frame  
 HE30 160 M1 6 IE2  
 7.5 kW / 10 Cv  
 970 RPM



|                             |                   |
|-----------------------------|-------------------|
| Motor type:                 | HE30 160 M1 6 IE2 |
| Output:                     | 7.5 kW / 10 Cv    |
| Speed (min <sup>-1</sup> ): | 970 RPM           |
| Frequency:                  | 50 Hz             |
| Voltage:                    | 400 V             |
| Current:                    | 15.9 A            |
| Power factor (Cos Ø):       | 0.78              |
| Poles:                      | 6                 |
| Insulation class:           | F                 |
| Temperature rise Class:     | B                 |
| Efficiency 50%:             | 86.3 %            |
| Efficiency 75%:             | 87.6 %            |
| Efficiency 100%:            | 87.2 %            |
| Torque:                     | 74 N.m            |
| Tstarting/Tnominal:         | 2.1               |
| Istarting/Inominal:         | 6.7               |
| Tmaximum/Tnominal:          | 2.1               |
| Noise:                      | 62 Db(A)          |
| Weight:                     | 118 Kg            |
| Bearing DE:                 | 6309 C3           |
| Bearing NDE:                | 6309 C3           |

Regime - S1

Altitude - 1000m

Environment Temperature - 40°C

## CONTACTS:

UNIVERSAL MOTORS Tel: +351 252 299 080  
 Rua de São Brás,745 Fax: +351 252 299 089  
 4480-782 VILA DO CONDE Mail: [geral@universalmotors.pt](mailto:geral@universalmotors.pt)

\* References applied only in the UK